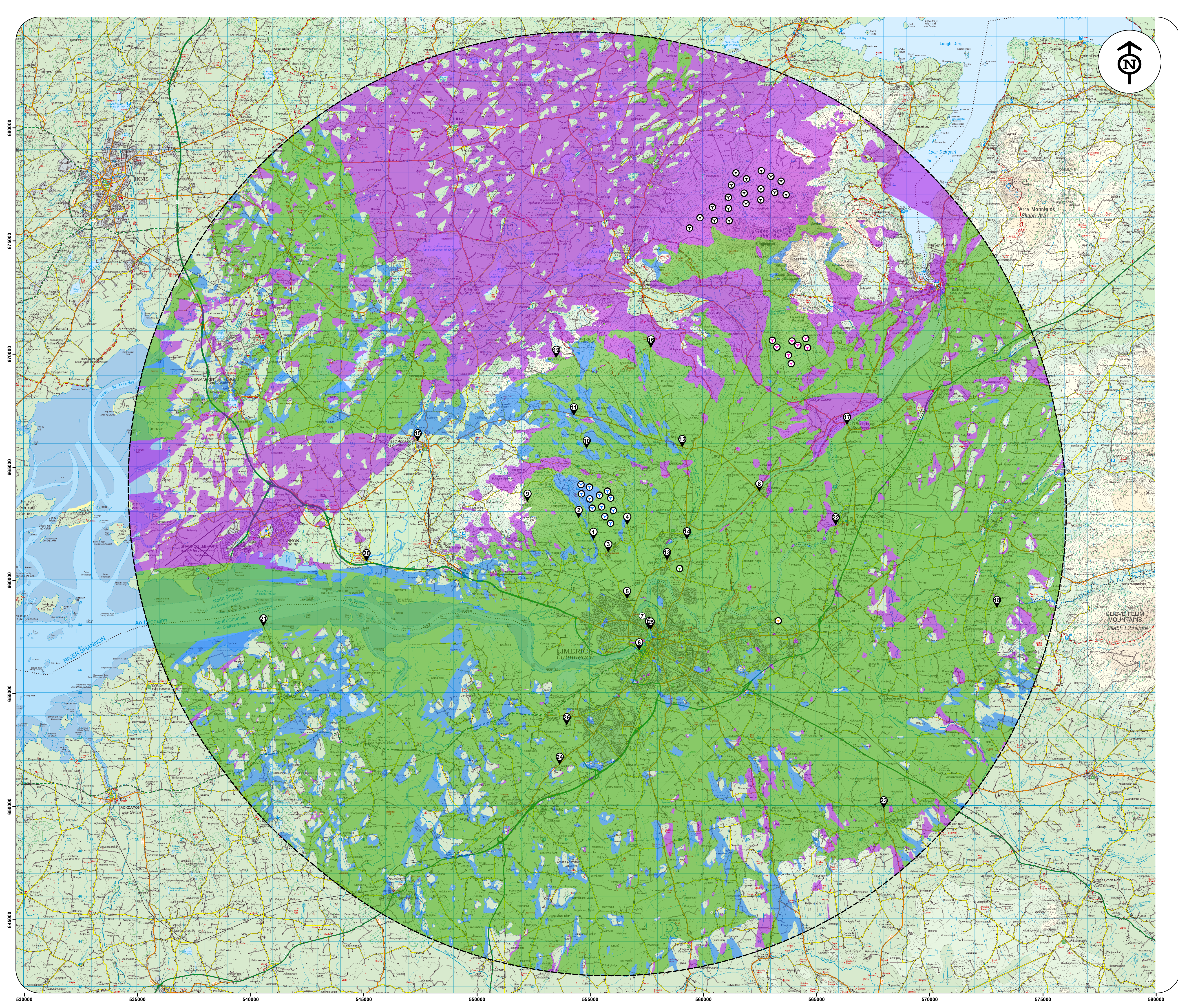


Appendix 12I

Figure 12-14 Cumulative ZTV (Hub Height)



Zone of Theoretical Visibility (ZTV) Map indicating areas with a theoretical view of the proposed Ballycar turbines in addition to all other permitted and operational wind farms within the study area

Calculated to Hub Height

- Proposed Ballycar Turbines
 -
- Cumulative Wind Farms
 - Fahy Beg (Under Appeal)
 - Permitted Carrownagowan
 - Operational Vistakon Turbine
 - Operational Blow Moulding Turbine
- Wind Farms Visible
 - Ballycar Only
 - Cumulative Only
 - Ballycar with Cumulative
- Photomontage Locations
 -
- Ballycar 20km Extent
 -

FINAL

12th Dec 2023

Scale when printed at A1 Size = 1:75,000

1 centimeter = 750 meters

- Notes:
- Theoretical visibility is based on an observer being able to see at least a full turbine blade.
 - Theoretical visibility is based on an observer eye level of 2m above ground level.
 - Calculation does not account for screening due to vegetation, forestry, buildings or any other similar forms of screening.
 - Calculation has been run using Ordnance Survey 10m DTM height data.
 - Earth curvature and light refraction has been included in this calculation.